



about pittsburgh, inc.



KATZ HOUSING CHAT 2016 INTRODUCTION TO PITTSBURGH

WELCOME

Greetings from Pittsburgh!

Please find below some information on neighborhoods, rentals, local amenities and other interests that we believe will be helpful as you begin to understand the Pittsburgh region and all the city has to offer.

-Dana Fortun

NEIGHBORHOODS

It seems as though the majority would like to be within walking or a close bike ride to Katz. Below are descriptions of some communities that meet these requirements. Also below are descriptions of a few additional city neighborhoods simply as a good to know for the wonderful amenities they offer.

CITY: LIVING

Oakland

Oakland is the academic, cultural, and healthcare center of Pittsburgh and Pennsylvania's third largest Downtown area. It is home to [UPMC](#) world-renowned hospitals and [Carnegie Mellon University](#), [University of Pittsburgh](#), and [Carlow University](#). This thriving neighborhood caters to its medical and university residents, with quaint cafes, specialty bookshops, eclectic shops, and international restaurants around every corner. Oakland is the neighborhood where Andrew Carnegie made a cultural Mecca, with the [Carnegie Library](#), [Carnegie Music Hall](#), [Art Museum](#) (located in a newer section known at Scaife Galleries), and the [Carnegie Museum of Natural History](#) providing enough entertainment and culture to last a lifetime. The neighborhoods of Oakland are diverse, ranging from student housing to larger, grand homes in historic Schenley Heights.

The Electronic Information Packet, which has been commissioned by University of Pittsburgh Katz Graduate School of Business, is for your personal use only, and may not be copied or provided to or used by others without About Pittsburgh's prior approval. © Copyright 2015 About Pittsburgh, Inc. All rights reserved.

CITY: LIVING

Shadyside

Shadyside is located in the heart of the East End of Pittsburgh and is the core of many boutiques, shops, lounges and restaurants. Often compared to the Georgetown district in Washington DC, Shadyside holds some of Pittsburgh's loveliest and largest homes. In addition to its beautiful Victorian mansions, Shadyside also offers an array of apartment and condominium buildings filled with hardwood floors and old-fashioned architecture. Shadyside's population has an eclectic mix of affluent families, young professionals, artists, and medical residents. The two main corridors of shopping, Walnut Street and Ellsworth Avenue, offer a variety of trendy shops and many smaller boutiques, art galleries, vintage stores and cafes, as well as the [Steel City Improv Theater](#). Shadyside is home to many educational institutions including [Chatham University](#), [Winchester Thurston](#), [The Ellis School](#), [Carnegie Mellon University](#), [University of Pittsburgh](#) and nearby [Carlow University](#).

Eastside

The term Eastside is what is being used to refer to the area connecting the neighborhoods of Shadyside and East Liberty. The website for the [Eastside](#) has a good map that shows you exactly the area being referenced. Walnut on Highland is basically at the "connector" on S. Highland Street. This area is very convenient to shopping such as Target and Whole Foods as well as many eateries. [Bakery Square](#), a new development with retail, businesses (Google), eateries and the [Bakery-Living Apartments](#) is the "hub" of the Eastside.

Squirrel Hill

Squirrel Hill is one of the largest and most diverse city neighborhoods. Squirrel Hill's premier location of only five minutes from downtown Pittsburgh attracts both students and professors who commute to the nearby universities. Like Shadyside, Squirrel Hill is also home to many educational institutions including [Chatham University](#), [St. Edmunds Academy](#), [Community Day School](#), [Carnegie Mellon University](#), and minutes away from the [University of Pittsburgh](#) and [Carlow University](#). Squirrel Hill maintains a vibrant business community offering a variety of non-chain shopping and restaurants. While Squirrel Hill is described as an urban neighborhood, there is over 1100 acres of public parks that provides endless recreational opportunities.

Greenfield

Greenfield is one of Pittsburgh's East End neighborhoods bordered by Squirrel Hill. Resident's describe their neighborhood as a "suburb in the city." The community is predominantly residential offering affordable homes from old Victorians to post-WWII ranches. Greenfield has a lot to offer in terms of recreation with 3 baseball fields, 4 basketball courts, 2 hockey rinks, 2 soccer fields, and a swimming pool! [Hough Brew & Pub](#) is a unique brewery which allows visitors to brew their own beer and [Big Jim's Restaurant](#) was featured on Diners, Drive-Ins and Dives! The City of Pittsburgh refers to Greenfield as a "surprise" neighborhood, because of the incredible views of the Downtown skyline which seem to "pop up" unexpectedly throughout the community.

Morningside

Morningside is one of Pittsburgh's East-End neighborhoods, bordered by Highland Park to the east and Stanton Heights to the west as well as sharing a short border with Upper Lawrenceville and East Liberty. [The Highland Park Residential Historic District](#), in Morningside, is listed on the National Register of Historic Places. Morningside is a quiet residential community where people tend to know one another. The Morningside Community Council plans several events throughout the year to keep the residents engaged one of which is the St. Rocco Festival, which takes place for two days in August and consists of an Italian mass followed by singing, dancing, and a fireworks display.

CITY LIVING

Point Breeze

Point Breeze is a mostly residential neighborhood nestled between Squirrel Hill and Regent Square. Point Breeze is a neighborhood made up of beautiful older homes along tree-lined streets, with front porches where neighbors sit and converse. Though an urban neighborhood, Point Breeze is, true to its name, breezy and wooded. It is also home to the [Frick Art and Historical Center](#). Adjacent to the mansion is [Frick Park](#), a favorite among residents for its forested hiking and biking trails as well as playgrounds and tennis courts. Point Breeze is also home to a small commercial district with upscale outdoor dining and small cafes.

Regent Square

Regent Square is a tree-lined neighborhood located on the eastern edge of the city of Pittsburgh. The community is made up of portions of four different municipalities. They include Edgewood, Swissvale, Wilkinsburg, and Pittsburgh. Regent Square is located along both sides of Braddock Avenue between the Parkway East and Forbes Avenue. Regent Square has a unique shopping and business district that is made up of primarily family and independently owned businesses. Some of these include boutiques, jewelers, florists, art galleries, antiques, salon/day spas, financial service firms, and a variety of restaurants and eateries. Another wonderful feature of this neighborhood is its prime location to [Frick Park](#).

Highland Park

This historic, family-oriented neighborhood is filled with tree-lined streets and spacious Victorian, Tudor and Colonial homes. Highland Park is home to the [Pittsburgh Zoo and PPG Aquarium](#) and adjacent to a beautiful 500-acre [city park](#), featuring a Victorian-style entry garden and reflecting pool. The commercial district along Bryant Street is quickly becoming a haven for Pittsburgh foodies, featuring some of the best coffee shops and eateries in the city.

A few other city neighborhoods that you might consider are listed below. They would be a little farther (still within a reasonably close bus-ride or less than 15 minute drive.

Lawrenceville

[Lawrenceville](#) is one of the fastest growing neighborhoods in Pittsburgh. Located less than 3 miles from the Golden Triangle and just down Butler Street from the Strip District, Lawrenceville has easy access to work, shop and play in Downtown, Shadyside, Bloomfield and Oakland. Lawrenceville's population is on the rise with its affordable properties, high quality boutiques and art spaces, bustling nightlife and music scene, and eclectic restaurants. The community is made up of a mix of transplanted young hipsters attracted to the reasonable rent and burgeoning art scene, and those whose families have lived in Lawrenceville for generations. Its residential streets are made up of older brownstones rich in character and newly renovated loft apartments. Lawrenceville is also home to the UPMC [Children's Hospital of Pittsburgh](#), which ranks in the top 10 of America's Best Children's Hospitals.

Bloomfield

This once working-class neighborhood, home to Pittsburgh's Little Italy, has become the scene of Pittsburgh's new "hipster" identity. In Bloomfield's many family-owned bars and restaurants, lifelong Pittsburghers mingle with artists and other young people, who have sought out Bloomfield for its affordability and eclectic blend of art spaces, galleries, thrift stores, delis, and groceries. Bloomfield is also home to [Western Pennsylvania Hospital](#), which has earned an international reputation for excellence in patient care, medical education, and research, and nearby the [UPMC Children's Hospital of Pittsburgh](#).

CITY: LIVING

A few other city neighborhoods that you might consider are listed below. They would be a little farther (still within a reasonably close bus-ride or less than 15 minute drive.

South Side

Only 1.5 miles from Pittsburgh's Golden Triangle, the South Side of Pittsburgh is an urban, hip neighborhood containing 15 blocks of historic Victorian architecture and shopping, some of Pittsburgh's best restaurants, art galleries, theatre and live music performances. The streets behind East Carson Street shopping are row houses on narrow streets. Some are single family and many are rentals whose residents include artists in residence, young professionals and a few empty nesters. The South Side is also home to the newer [South Side Works](#). South Side Works incorporates corporations (the largest being American Eagle Outfitters), national retailers as well as contemporary restaurants and luxury apartments into the historic South Side community. The South Side also offers some great recreation. They have their very own [South Side Riverfront Park](#) that includes both a public boat launch and a canoe launch. Outdoor enthusiasts can hike, bike or rollerblade on this 5-mile riverfront trail adjacent to the community and connecting to the bike trail surrounding the rest of the city.

CITY: GOOD TO KNOW

Mt. Washington

Overlooking the Golden Triangle, Mt. Washington is famous for its breathtaking views of the city and beyond. Once known as Coal Hill and home to early mill workers, Mt. Washington has become an increasingly popular place to live since Pittsburgh's first Renaissance, and today is home to a mix of young professionals and life-long residents. The neighborhood offers a wide range of housing options, from affordable row houses to upscale condominiums right on the edge of the mountain overlooking the city. In addition to living there is some shopping and dining options capturing the spectacular views of the city. There are two inclines still in operation and both function as a tourist attraction and as transportation for Mt. Washington residents into Station Square and the Golden Triangle.

Golden Triangle

The Golden Triangle is the confluence of three rivers—the Allegheny and Monongahela forming the Ohio. Today the Golden Triangle is a business and corporate center including PPG, PNC, UPMC, Heinz, US Steel, Highmark and many others, as well as offering high-end condos for residential urbanites. Lofts and upscale rentals have become popular in and around the Golden Triangle. The Golden Triangle has experienced a major development in the birth of the Cultural District in the center of the downtown area. The [Cultural District](#) is a fourteen square block area offering the most performing art centers in a concentrated area outside of NYC.

North Side

The North Side is home to two distinct areas in Pittsburgh—the historic [Mexican War Streets](#), and the North Shore, home to [PNC Park](#) (Pittsburgh Pirates' stadium) and [Heinz Field](#) (Pittsburgh Steelers' stadium). The Mexican War Streets feature beautiful restored Victorian row houses and lush urban gardens. [The Mattress Factory](#), Pittsburgh's installation art museum and the [Children's Museum](#) are also located on the North Side and above the North Shore. Closer to the river, what we now refer to as the North Shore, are the stadiums, [Carnegie Science Center](#) and [Sports Works, Stage AE](#), the [Warhol Museum](#), and a row of outdoor restaurants and bars overlooking the water and downtown Pittsburgh. Whether it's a stroll along the river, a kayak trip around the point, hotdogs at the game, or an afternoon at the museum, entertainment is never far in the North Side.

CITY: GOOD TO KNOW**Strip District**

Less than 1 mile from Downtown Pittsburgh's central business district along the Allegheny River, the Strip District is a marketplace of specialty groceries, restaurants, coffee shops, and street vendors. The Strip is especially known for its fresh produce and ethnic markets that reflect the rich diversity of Pittsburgh's cultural heritage, as Oriental, Italian, Middle Eastern, Latin American, and Caribbean food markets can all be found here. The Strip has also seen an influx of trendy restaurants and entertainment spots, making it one of the city's night-spots.



about pittsburgh, inc.

Katz Graduate School Students

MAP

MAP KEY

⊙ University of Pittsburgh



Carnegie Museums



Cultural District



Biking/Walking Trails



Pittsburgh Zoo



Malls



Parks



City



North



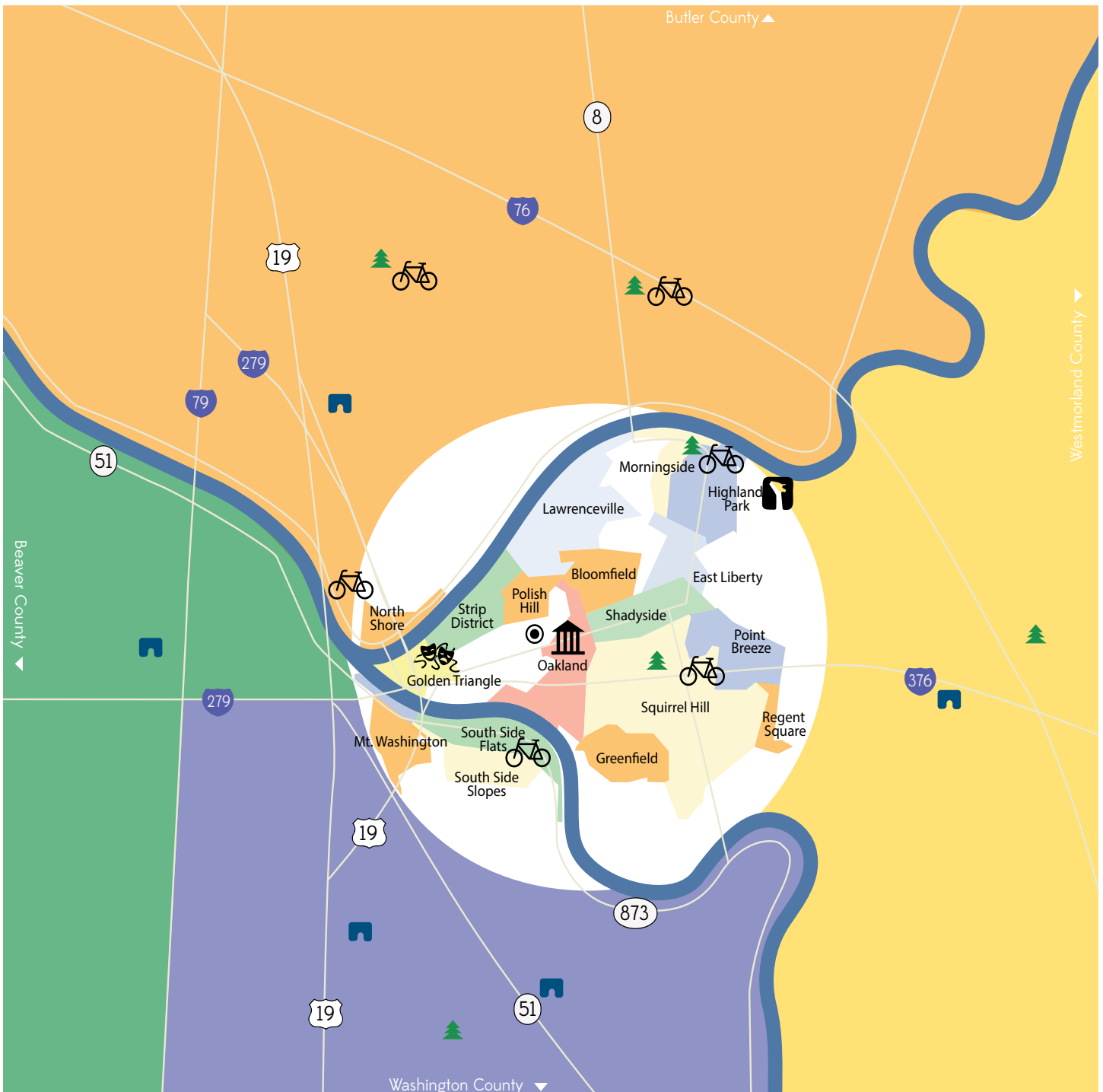
South



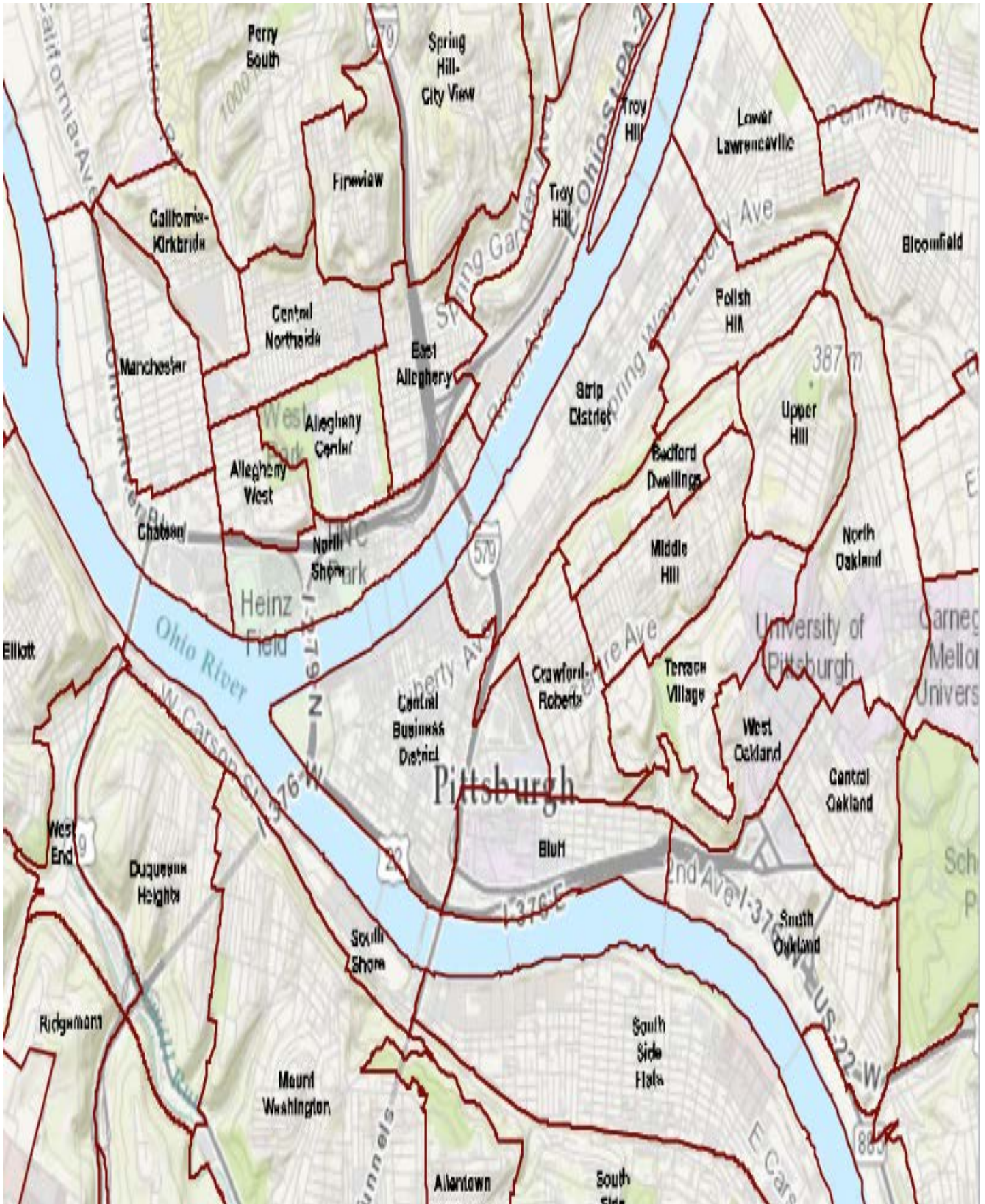
East



West



OAKLAND BREAKDOWN



SCHOOLS

For those with children, the suburbs of Western PA have some excellent public schools - the best in the state! There are several sites where you can access statistics for the various schools:

- [Western PA Guide To Schools](#) (source: Pittsburgh Business Times)
- [Best Public High Schools in Pennsylvania](#) (source: Niche.com)
- [Pennsylvania Public School Report Card](#) (source: Pittsburgh Post Gazette)

Residents of the city neighborhoods are serviced by the [Pittsburgh Public School District](#). PPS is the largest school district in Allegheny County (over 25,000 students) and the second largest school district in Pennsylvania. The district is comprised of 54 schools (K-12) with 22 K-5 elementary schools, 12 K-8 elementary/middle schools, 7 middle schools (6-8), 6 jr/sr high schools (6-12), 4 senior high schools (9-12) and 3 “special schools.” PPS offers 12 whole-school [magnet programs](#) with neighborhood schools offering 9 magnet programs. (Some programs are offered in multiple locations). Those that wish to attend PPS can choose from 2 types of schools ~ neighborhood or magnet. Neighborhood schools are assigned by home address and can also be referred to as “feeder schools.” Magnet schools are geared towards special interests and talents. Since magnet schools are not neighborhood specific, students who live anywhere within the city of Pittsburgh limits are eligible to attend. However, admittance is via lottery and for many of the programs is very competitive.

PRIVATE AND PAROCHIAL SCHOOLS

There are also many Independent Private and Parochial School options in the Pittsburgh region.

Christian Schools[Pittsburgh Christian Schools](#)

[Eden Christian Academy](#) - 2 campuses for K-6 and 1 campus for 7th-12th grade

[Jubilee Christian School](#) - 1 campus in Mt. Lebanon for K-4 and a campus in Dormont for 5th-8th grade

[Hillcrest Christian Academy](#) (K-12 - Bethel Park)

[Rhema Christian School](#) (K-8 - Moon Township)

[Robinson Township Christian School](#) (K-12 - Robinson Township)

[Redeemer Lutheran School](#) (K-12 - Verona)

[Cheswick Christian Academy](#) (K-12 - Cheswick)

[Trinity Christian School](#) (K-12 - Forest Hills)

Independent Schools

[Winchester Thurston](#)

[Shady Side Academy](#)

[Sewickley Academy](#)

[St. Edmunds](#) (K-8)

[Falk School](#)

Catholic Schools

[Catholic Elementary Schools](#)

[Catholic High Schools*](#)

*[Vincentian Academy](#) (offers the IB Program)

PRE-SCHOOL/PRE-K OPTIONS

Winchester Thurston (WT has a Shadyside campus)

Shady Side Academy (Lower school campus located in Pointe Breeze)

St. Edmunds (Squirrel Hill)

Shadyside Presbyterian Church Pre-School

Shady Lane Pre-School (Shadyside)

Campus School (Oakland)

Grandview Montessori (Mt. Washington)

Pittsburgh has a unique rental market in the sense that there really isn't a one-stop-shop for finding a rental. That said, below are several resources to help with a rental search.

Key Points:

- Most apartments in Pittsburgh are leased on 12-month terms. Some will offer shorter term leases with premiums but it typically depends on the time of the year.
- The rental market in Pittsburgh is operating at over 85% occupancy, so if you find something you feel meets your needs, do not wait as it likely won't be available for very long! The peak rental market is May - July.
- Furnished rentals tend to be quite expensive in Pittsburgh. It is often more cost effective to rent an unfurnished unit and rent furniture (or purchase inexpensive furniture and sell it on Craig's List when you move out!) If you do want to rent a furnished unit, [Craig's List](#) is a good resource as well as the following sites:

*[Shadyside Rentals](#)

*[Corporate Accommodations](#)

*[Bridgestreet](#)

*[Air B N B](#)

GENERAL RESOURCES

[Post-Gazette](#)

[Craigslist](#)

[Realtor.com](#)

[Trulia](#)

[Zillow](#)

[Village Green](#)

[Beaux Arts Living](#)

MULTI-LIST RESOURCES

[Coldwell Banker](#)

[Howard Hanna](#)

[Berkshire Hathaway](#)

PROPERTY MANAGED RESOURCES

DOWNTOWN

[River Vue](#)

[Penn Garrison](#)

[201 Stanwix](#)

[526 Penn Ave](#)

[The Clark Building](#)

[The Encore on 7th](#)

[Standard Life](#)

[The Pennsylvanian](#)

[Market Square Place](#)

[We Do Property](#)

[Aria on 7th](#)

[Residences at ALCOA Building](#)

[Lando Lofts](#)

MT WASHINGTON

[Grand View Point](#)

SOUTH SIDE

[Carson Street Commons](#)

[Flats at South Side Works](#)

[Residences at South High](#)

[Healey Company](#)

[Brix At 2Print Shop Lofts](#)

[Re360](#)

[Live South Side](#)

OAKLAND

[Oakhill Apartments](#)

[Sterling Land](#)

[Fifth Ave School Lofts](#)

[Mozart Management](#)

[Luna Lofts](#)

[Flats on Fifth](#)

[University Loft Apartments](#)

SHADYSIDE

[Franklin West](#)

[Kenmawr](#)

[Shadyside Commons](#)

[Highland Plaza](#)

[Essex House](#)

[Chalfont Apartments](#)

[Claybourne Apartments](#)

[Sherwood Towers](#)

[Webster Hall](#)

[Walnut Capital](#)

[Morrow Park City](#)

[Kamin Realty](#)

[Rockwel Realty](#)

EAST SIDE

[Walnut on Highland](#)

[Eastside Bond](#)

[Bakery Living](#)

SQUIRREL HILL

[The Reserve @ Summerset](#)

[The Gateway at Summerset](#)

[Walnut Capital](#)

STRIP DISTRICT

[Brake House](#)

[The Cork Factory](#)

[The Yards at 3 Crossing Lot 24](#)

GENERAL

Pop City
 Next Pittsburgh
 Post Gazette
 City Paper
 Pittsburgh City Living
 Citiview Pittsburgh
 Stuck in Pittsburgh
 Pittsburgh

TRANSPORTATION

Uber
 Yellow Taxi Cab Pittsburgh
 Amtrak
 Greyhound Bus
 Pittsburgh International Airport
 Port Authority of Allegheny County

PARENTS

Pittsburgh Parent
 Pittsburgh Mommy Blog

SHOPPING

Southside Works
 Bakery Square
 Shadyside
 Waterfront
 Ross Park Mall
 South Hills Village
 Tanger Outlets

CULTURE

Carnegie Museums
 Frick Art & Historical Center
 Pittsburgh Center for the Arts
 The Warhol Museum
 The Mattress Factory
 Toonseum
 Wood Street Galleries
 Photo Antiquities Museum
 The Pittsburgh Cultural Trust
 The Pittsburgh Cultural District
 Pittsburgh Symphony
 City Theatre
 Downtown Pgh Arts & Culture
 Pittsburgh Musical Theater

CLASSICAL MUSIC

Pittsburgh Symphony
 Classical WQED
 Pittsburgh Opera
 Pgh Chamber Music Society
 Chatham Baroque
 Alia Musica
 Pittsburgh Camerata
 Renaissance & Baroque Society
 Bach Choir of Pittsburgh
 The Mendelssohn Choir

FESTIVALS

Pittsburgh Festivals
 Dragonboat Festival
 Bike Fest
 Oktoberfest
 Three Rivers Film Fest
 Folk Fest
 Independent Film Fest
 International Children's Fest
 Irish Fest
 Little Italy Days
 Three Rivers Regatta
 Renaissance Fest
 Shadyside Arts Fest
 Three Rivers Arts Fest
 Wine Fest

GLOBAL RESOURCES

Global Pittsburgh
 World Affairs Council of Pittsburgh
 Vibrant Pittsburgh
 University of Pittsburgh Nationality Rooms

MOVIE THEATERS

Manor Theaters
 Regent Square Theater
 Southside Cinemas
 Waterfront Theaters
 Harris Theater
 Hollywood Theater
 Row House Theater

OUTDOORS

Allegheny County Parks
CitiParks
Laurel Highlands
Venture Outdoors
Friends of the Riverfront
Pittsburgh Parks Conservancy

Biking

Bike Pittsburgh
Golden Triangle Bike Rental
Pedal Pittsburgh
Great Allegheny Passage
Pittsburgh Trail Link
Rails to Trails
Montour Trail
Erie to Pittsburgh Trail Alliance
North Park Blazed Trails Map
Active Pittsburgh - Biking

Running

Angio
People Who Run Downtown
Great Race
Pittsburgh Marathon
Fleet Feet Resources

Hiking

Local Hikes
All Trails
Pgh Hiking Meet Up Group

Water

Boat Pittsburgh
Fish Pittsburgh
Kayak Pittsburgh
Laurel Highlands River Tours
White Water Rafting Adventures
Splash Water Sports
Three Rivers Rowing Association
Pittsburgh Rowing Club
Steel City Rowing

TRAVEL

Pittsburgh is within a day's drive/500 miles of nearly half of all U.S. and Canadian citizens. And, the city is less than 90 minutes flying time from 20 states and Canada. For example:

- Cleveland, Ohio (Rock & Roll Hall of Fame) – 2 Hours
- Washington, DC – 4 Hours
- Niagara Falls, Canada – 4 Hours
- New York City – 6 Hours (maybe 7 depending on who's driving!)
- Chicago – 9 Hours (but flights are inexpensive and it only takes about 45 minutes via air!)
- Philadelphia, PA – 5.5 Hours

DAY TRIPS/GETAWAYS

Bedford Springs (1.5 Hrs Drive)
Fallingwater (1.25 Hrs Drive)
Erie (2 Hrs Drive)
Chautauqua, NY (2.25 Hrs Drive)
Penn's Cave (3 Hrs Drive)
Cleveland, OH (2.5 Hrs Drive)
PA Grand Canyon (3.25 Hrs Drive)
Deep Creek, MD (2.5 Hrs Drive)
Nemacolin (1.25 Hrs Drive)
Seven Springs (1 Hr Drive)

DAY TRIPS & ACTIVITIES - KIDS

The Children's Museum
Carnegie Science Center
Carnegie Museums
Heinz History Center
The Warhol Museum
Toonseum
Pittsburgh Zoo & Aquarium
National Aviary
Living Treasures Animal Park
Phipps Botanical Gardens
The Rink at PPG (Winter)
Kennywood
Idlewild
Sandcastle
Jellystone Park
Incline Ride

RECREATION

SPECTATOR SPORTS

Pittsburgh Pirates
(Pro Baseball)
Pittsburgh Penguins
(Pro Hockey)
Pittsburgh Steelers
(Pro Football)
Pittsburgh Passion
(Women's Football)
Steel City Roller Derby
(Women's Roller Derby)
Pittsburgh Riverhounds (Men's
Soccer)
Pittsburgh Harlequins (Rugby)
Pittsburgh Rugby Club

FITNESS CENTERS

Club One (Shadyside)
X-Treme Fitness (Shadyside)
Fitness Factory (Shadyside)
Orange Theory Fitness (East End)
Downtown YMCA (Golden Triangle)
PNC YMCA (Golden Triangle)
The Rivers Club (Downtown)
LA Fitness (South Side Works &
Bakery Square)

TENNIS

USTA Allegheny Mountain District
PA Tennis Academy
Mellon Park Tennis Center
Edgewood Club
CitiParks Tennis

GOLF

Golfers Lifestyle
Golf Now Pittsburgh
Hit The Links
Post Gazette Golf Guide
Visit Pittsburgh Golf Guide

ADULT SPORTS LEAGUES

Pittsburgh Sports League
Stuck in Pittsburgh
Sports Monster
Get Fit Pittsburgh

SNOW SKIING

Seven Springs
Hidden Valley
Nemacolin
Boyce Park
Laurel Highlands

FOOD

FOODIES

[Edible Allegheny](#)
[Best Restaurant Guide](#)
[Eat PGH \(Food Blog\)](#)
[Man V Food](#)
[Pittsburgh Magazine Eat & Drink](#)
[Table Magazine](#)
['Burgh Bits & Bites](#)

FARMERS MARKETS

[Dept. of Agriculture Farmers Market List](#) (search via Zip Code)
[PG 2015 Farmers Markets*](#)

*2016 not out yet

[CitiParks Farmers Markets](#)
[Pittsburgh Public Market](#)
[Farmers Market Cooperative of East Liberty](#)
[Edible Allegheny](#)

BEER

[Pgh Beer Mapping Project](#)
[Beerfest](#)
[Beers of the Burgh](#)
[Craft Beer Week](#)
[Pittsburgh Craft Beer](#)
[House of 1,000 Beers](#)
[The Beer Market](#)
[Sharp Edge](#)

DINING RECOMMENDATIONS

Just a few of the ever-growing list of options!

- [Eleven](#) (Strip District)
- [Kaya](#) (Strip District)
- [Penn Avenue Fish](#) (Strip District & Downtown)
- [Sonoma](#) (Downtown)
- [Il Pizzaiolo](#) (Downtown)
- [Ten Penny](#) (Downtown)
- [Butcher & Rye](#) (Downtown)
- [Nine on Nine](#) (Downtown)
- [Sonoma Grille](#) (Downtown)
- [Nola](#) (Downtown)
- [Soba](#) (Shadyside)
- [Smoke](#) (Lawrenceville)
- [Pusadees Garden](#) (Lawrenceville)
- [Bar Marco](#) (Strip District)
- [BRGR](#) (East Liberty)
- [Casbah](#) (Shadyside)
- [Café at Frick Park](#) (Point Breeze)
- [Dish](#) (South Side)
- [Doublewide Grill](#) (South Side)
- [E2](#) (Highland Park)
- [Fat Heads](#) (South Side)
- [Franktuary](#) (Downtown)
- [Girasole](#) (Shadyside)
- [Harris Grill](#) (Shadyside)
- [Industry Public House](#) (Lawrenceville)
- [Jerome Bettis Grille 36](#) (North Shore)
- [Lidia's](#) (Strip District)
- [Mad Mex](#) (Oakland, Shadyside)
- [Nakama](#) (South Side)
- [Paris 66](#) (East Liberty)
- [Piccolo Forno](#) (Lawrenceville)
- [Proper Pittsburgh](#) (Downtown)
- [Pointe Brugge](#) (Point Breeze)
- [Seviche](#) (Downtown)
- [Six Penn](#) (Downtown)
- [Up Kitchen](#) (Shadyside)

GOOD TO KNOW

The Allegheny County Belt System: You may have noticed signs along Pittsburgh’s roads indicating the Red, Orange, Yellow, Green, Blue, and Purple Belts. The belts are a system of color-coded loops around Pittsburgh, meant to help drivers who find themselves in unfamiliar parts of Pittsburgh’s suburbs.

Municipalities, Townships, and Boroughs: In Pennsylvania, the distinction between a township and a borough is not an incredibly significant one—the most important thing to keep in mind is that both terms indicate self-ruled municipalities. Self-ruled municipalities are in charge of their own municipal taxes, public works, and departments.

Municipality Tax Millages (Allegheny County)

School Districts: Each municipality maintains its own school district (some municipalities have merged to form one larger school district). While each district has just one high school (sometimes accompanied by a vocational school), the number of middle and elementary schools, as well as the breakdown of grades per school, vary by district and are often subject to change as neighborhoods expand.

School District Tax Millages (Allegheny County)

Neighborhoods: The Pittsburgh region has several areas that are neither townships nor boroughs, but that nevertheless are recognized as distinct neighborhoods by residents. One such area is Regent Square in Pittsburgh’s East End, technically made up of pieces of four distinct municipalities: Edgewood, Swissvale, The City of Pittsburgh, and Wilkinsburg. Regent Square has its own culture, business district, and community pride.

Villages: Larger municipalities are often home to smaller villages. Villages are subject to the jurisdiction of their municipality, and might be clusters of homes, small business districts, or historic settled areas. Examples include the village of Dorseyville in Indiana Township and the village of Wildwood in Hampton Township.

Census-Designated Areas: Pittsburgh also has several areas that are specifically for census purposes. These areas are little more than zip codes and do not refer to towns, boroughs, or even school districts. Some of these include Wexford, Warrendale, Gibsonia, and Allison Park.

South Side versus South Hills versus East End: In Pittsburgh, “Sides” and “Ends” denote city neighborhoods, while “Hills” denotes suburban neighborhoods outside the city limits.

Lawn Chairs in Parking Spots: If you see a chair on the side of the street, don’t move it! That’s Pittsburghese for saving a spot!

GOOD TO KNOW

PENNSYLVANIA TAX INFORMATION

Pennsylvania State Income Tax: 3.07%

Pennsylvania Sales Tax: 6%

(Food and clothing are tax exempt)

Allegheny County Sales Tax: 1% in addition to the 6% state sales tax

(Food and clothing are tax exempt)

Local Wage Tax:

City of Pittsburgh Residents 3%

Suburban Residents Approximately 1% may vary

Pennsylvania Car Registration Fee: \$36 annually

Property Tax is calculated differently in each county. In Allegheny County, the 2016 Millage rate is 4.73 mills or \$.473 per \$100.00 valuation. This millage rate is only a portion of the equation used to calculate property tax. A good “general rule of thumb” for calculating property tax in Allegheny County is to estimate 3% for every \$100,000. The property taxes in outlying counties could be 1/3 or even up to 1/2 less than in Allegheny County.